



Professional

Reliable

Accurate

PANELS FOR RENEWABLE ENERGY SOLUTIONS

Smart Engineering Innovation

PANELS

For Renewable Energy Solutions

CONTACT US



Address : 31 Baroun City
Project

Middle Mound,
Mokatam. Cairo Egypt

Ph : +202 266 50 520

Fax : +202 266 50 521

e-mail : info@panels-
solutions.com

web site: www.panels-
solutions.com

CONTENTS

- **WHO WE ARE**
- **OUR COMMITMENT**
- **OUR SOLUTIONS**
 - **Healthcare Solutions**
 - I- **Low current system**
 - II- **Planning & Consultancy**
 - **Hospital Information System (HIS)**
 - **OMNI Channel Application**

WHO WE ARE



- **We are** a group of highly qualified engineers with experience in renewable energy sector & healthcare sector that can provide truly valuable integrated engineering services to our customer.
- **We ensure** that our services efforts support our client's vision, mission and values while optimizing the often-opposing forces of need and reality.
- **We deliver** a complete package of selected services. A perfect result for partners and clients is what we are going for and we make sure to over deliver those expectations every time.
- **We have** a flexible facility planning concepts. Our approach is focusing on delivering targeted results to our clients.
- **Our body** of work and experience allows us to support comprehensive technology plans that reflect the latest advance in renewable energy & healthcare while addressing the unique requirements and characteristics of our client's projects.

OUR COMMITMENT

➤ Cost Effective

We will always recommend the most economical route for your business.

➤ Reliable

Our engineers will turn up when booked, on time and smart.

➤ Quality Assurance

We always follow the requirements of quality standards in every step to ensure everything is completed accurately and on time.

➤ Peace Of Mind

We are here for the full lifetime of your equipment from supply through to service and then disposal



OUR SOLUTIONS



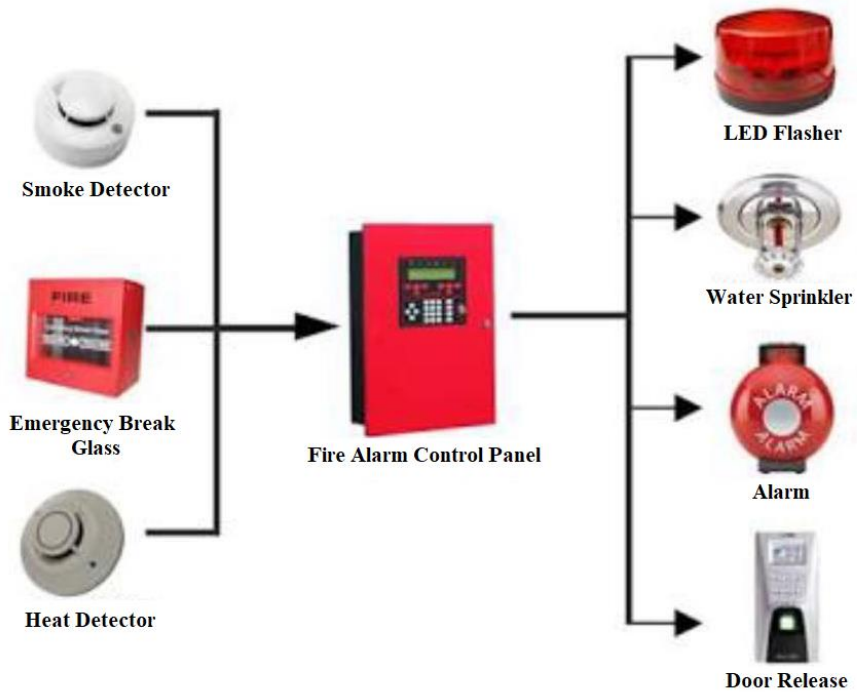
- **Our healthcare services Includes** Low currents systems Including :
Fire system alarm, IP- Telephone system, Hospital sound system, CCTV Camera system, Clock system, TV system, Nurse call system, Access control system.
- **Our clinical engineering services** cover the **Whole Equipment Life Cycle** starting from **Technical Consultancy**, to the **Procurement, Maintenance** and to **Eventual Reconditioning** and **Refurbishment**, ensuring a **Continuous Modernization Framework.**
- **Our clinical engineering services** can be provided both **individually** and **As part of a single, Integrated service**, offer exceptional flexibility and modularity to meet customers diversified needs.



Low Current Solutions

FIRE ALARM SYSTEM

- Locating Smoke detectors & heat detectors
- Manual call station and sounders
- Fire alarm control panel

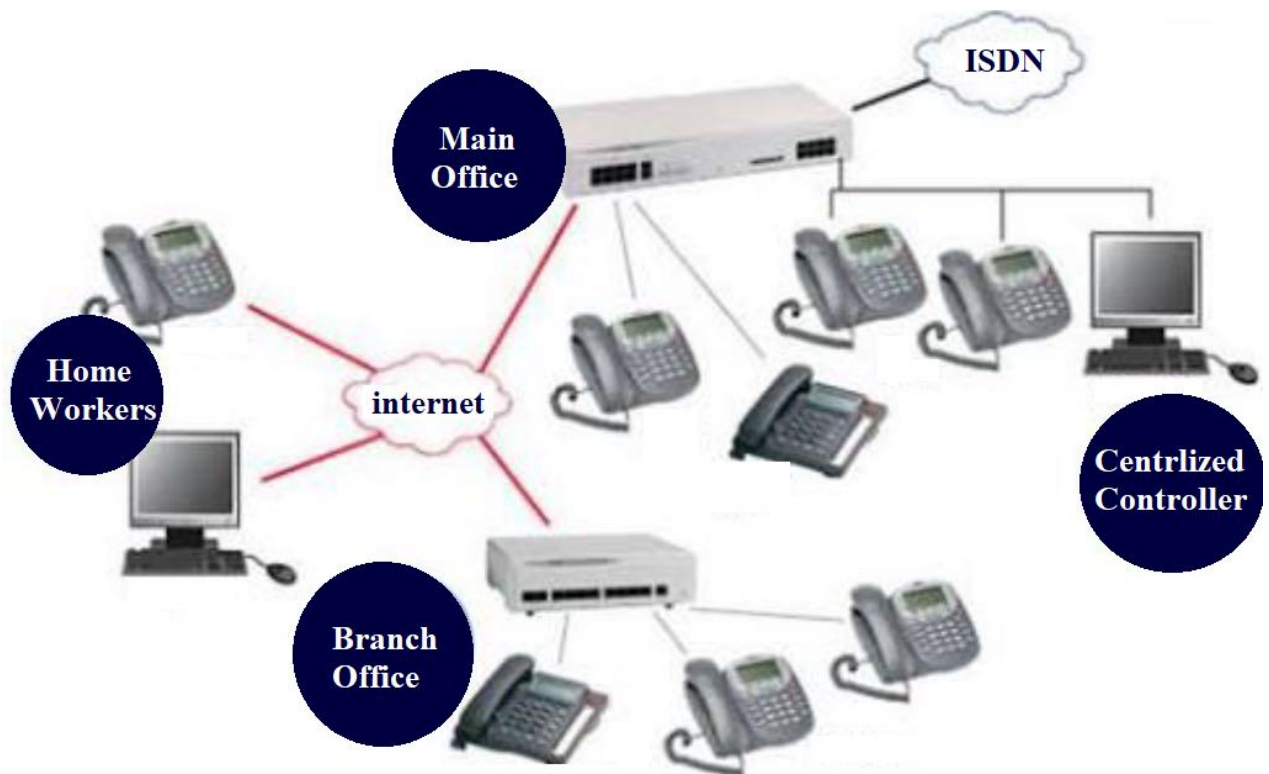


IP TELEPHONE SYSTEM

- Location of data outlets according to the requirements of the building
- Outlets types, Cables, fiber optic cables
- Switches, connectors
- Data Cabinets
- Main patch panels, server, core switch

TELEPHONE SYSTEM

- Telephone terminal cabinets, main distribution frame
- Wiring, color coding



HOSPITAL SOUND SYSTEM

- Locating speakers in the corridors, entrance halls, waiting areas, etc.
- Speaker selection
- Zoning of the system
- Selection of Amplifiers
- Different types of Microphones



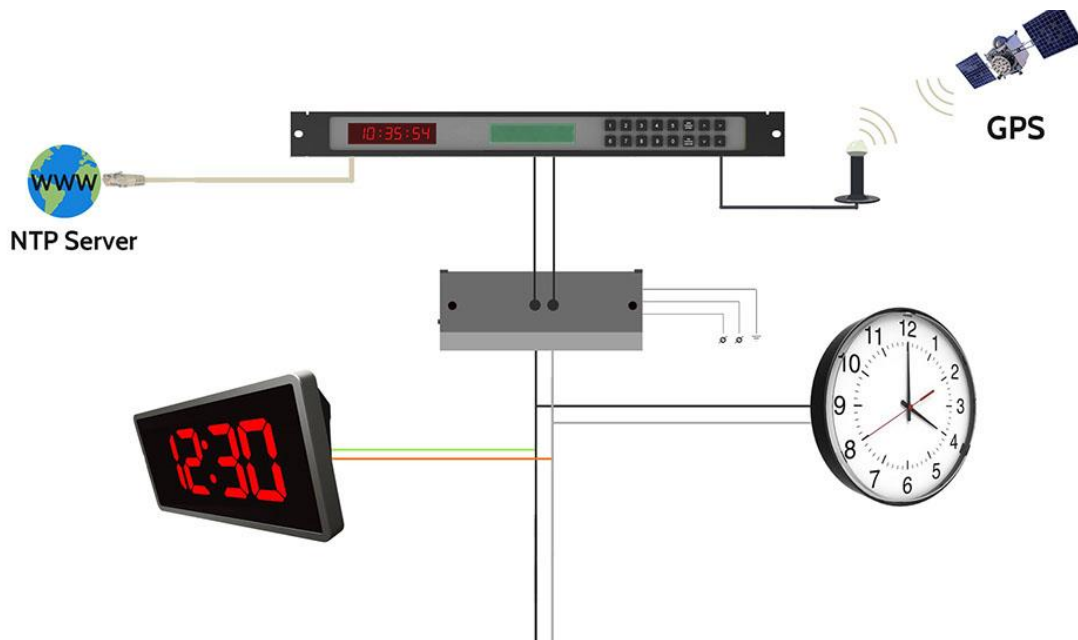
CCTV CAMERA SYSTEM

- Location of cameras according to coverage area
- Types of cameras- Fixed type, PTZ cameras, IP-Cameras,
- Digital video recorder
- Wiring of Cameras
- CCTV Monitors



CLOCK SYSTEM

- Different types of clocks-Analogue, Digital.
- Master Clock and Slave clock.
- Cable selection.



TV SYSTEM

- Location of TV outlets and layout preparation
- RF Splitters
- Distribution Amplifier
- Digital satellite receiver
- LNB and Dish antenna
- Coaxial Cables



NURSE CALL SYSTEM

Flexible, highly reliable & secure nurse call systems for hospitals and health care organizations.

Real Time Nurse Call Systems

Real-time and historic at-a-glance insight into system functionality & staffing performance metrics by facility, unit or organizational levels

Software At Our Core

Software-based nurse call translates to more flexibility, less costly integrations, higher reliability and easier to scale solutions.

View the Entire Workflow

Our reporting & forensic auditing package helps nurse executives improve performance, better align staff and enhance accountability.



ACCESS CONTROL SYSTEM

- We provide complete & integrated Access Control solutions which utilizes the use of the existing network with minimal bandwidth requirement.
- Our solutions will meet the security needs for today and tomorrow.
- We are always able to upgrade existing solutions progressively as Systems and products are developed.





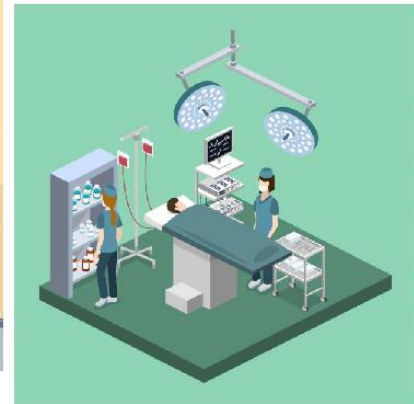
Planning And Consultancy

Planning of technology investments in medical equipment and devices, drafting upgrade, integration and development plans.

Comparative technical assessment of new technologies (**Health Technology Assessment**), including references to designing new health and social care facilities.

Support for **accreditation of healthcare facilities** and **certification of services or departments**.

Analysis of risk factors connected with the use of medical equipment.



Corrective maintenance

Upon call in case of the biomedical equipment's malfunction to restore the correct functioning of the biomedical device, thereby guaranteeing a service performance in terms of downtime. Different types of contracts with the main manufacturers of biomedical equipment and devices guarantee where necessary, an ongoing support system, training and optimize the provision of additional spare parts.

Preventive maintenance

Checks and calibration carried out following specific benchmark operating protocols compliant with manufacturer instruction and local and international standards. The operations are scheduled in groups of the same type of equipment, based on their location and availability.



Safety checks & Functional Controls

Checking that the equipment's safety requirements are maintained over time, particularly in relation to connecting them to the electrical power network. Safety checks make part of the scheduled maintenance operations, plus carrying out practical tests to check the quality of the service provided, with subsequent adjustments and calibration



Calibration Labs

We perform calibration for all medical devices located in the healthcare facilities with the possibility of establishing medical calibration laboratories inside the hospitals, to serve all medical devices in hospitals.



Education & Training

Training courses for doctors, technicians and nursing staff regarding the correct and safe use of biomedical equipment.



Inventory Service

Counting, labelling, classification and subsequent updating of the inventory.
General archive of user manuals.



PANELS also perform all IT infrastructure, Networking & Cabling for any healthcare facility.

PANELS provide solutions for medical gas network starting from design to Installation of different medical gas stations (O₂, Air ,Vac).

PANELS also provide



Hospital Information System (HIS) solutions from our partner **EXSYS solutions**

AND

Omni-Channel application from our partner **ANSPIRE**

To manage all the aspects of a hospital operation, such as **Medical, Administrative, Financial & Legal Issues** and the **Corresponding Processing of Services.**



Hospital Information System (HIS)

Introduction

- We provide HIS to get better way to manage healthcare
- Information Technology (IT) plays a critical role in making healthcare more dynamic & capable of driving performance improvements
- IT has a mission of accurate data capture and timely deliver of information for healthcare decision making

Objective

- **To provide** an integrated solution for the hospitals which helps in efficient management of hospitals.
- **Improve** work efficiency.
- **Eliminate** the chance of any pilferage.
- **Improve** management efficiency of hospitals.
- **Save costs** through the identification of primary cost drivers at hospital monitoring mechanism at lower costs.
- **Improve** patient care.
- **Improve** fiscal control.
- **Enable** the growth of the hospital.
- **Improve** management decision –making through the availability of integrated management information.

HIS Modular Groups

01 FINANCIAL

- Cash & Banks Management
- General Ledger
- Accounts receivable
- Accounts payables
- Purchase orders
- Inventory Management
- Fixed Assets



02 CLINICAL

- Patient Master Index
- Medical Records
- Doctor Desktop
- Nursing movement
- Outpatient scheduling
- Admission, discharge & Transfer
- Medical File Tracking
- 04 ADMINISTRATION
- Security & Privilege
- Human Resource
- Payroll
- Time Attendance
- key Performance Indicator Tools



03 DEPARTMRNTAL

- Pharmacy
- Laboratory
- Radiology
- Operating Theaters



04 PATIENT FINANCIAL

- Patient Contracts
- Order Entry
- Patient billing Revision



05 ADDITIONAL MODULES

- Emergency Room
- Blood Bank
- Renal Dialysis
- Dietary
- Chemotherapy

Features



- **Completely Online & Integrated**
- **Comprehensive**
- **Compliance With Standards**
- **Excellent Reporting System**
- **Multiple Location / Users**
- **Balanced Offering**
- **Assessment of exact requirement & priority**
- **Upgrades**
- **Easy to Use Mouse Driven Point & Click Design**
- **Less Number of Key strokes and mouse clicks**
- **Maintenance & Administration**

- **Modulatory**
- **Customizable**
- **Reliability**
- **Advantages**
- **Reduce Costs**
- **Improved Patient Care**
- **Better Patient Safety**
- **Improved Patient Management Capabilities**
- **Fully Integrated**
- **Improved decision- making**
- **Better Information Security & Confidentially easy to use**
- **Highly Programerized**



Omnichannel App.

Introduction



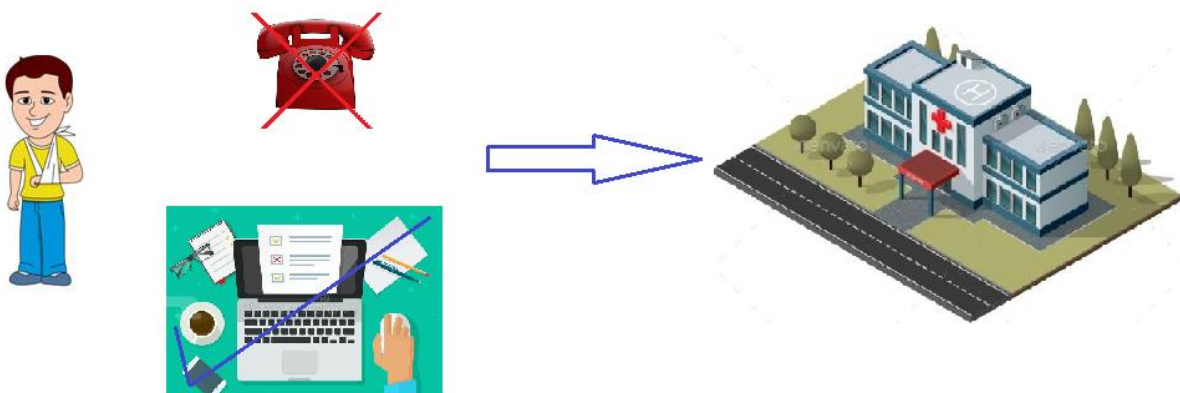
- With today's computing technologies patients have become more involved more than ever before with their healthcare.
- The technologies are also supporting today's model of patient –centric healthcare where the overall experience is defined as much by what happens before and after the hospital visit as by what happens during the visit.
- Patients can communicate with their healthcare facility via email, text, social media, web and mobile phone.

Advantages

- **IMPROVING** Patient outreach
- **QUALITY** customer service & support
- **REDUCING** patient wait time
- **QUERY BASED** call routing
- **LEVERAGING** presence on social media



Our Solutions



Quickly connecting with doctors based on their ratings and feedbacks.

Chat with your medical expert and discuss or consult your health problem privately.

Keep your medical documents and videos uploaded and keep them safe and secure. They can be shared with the respective doctors to get much accurate result.

Get appointment reminders automatically before your consultation and receive text message reminders before your appointment.

Be linked with the HIS in the healthcare facility to be easy to retrieve your medical data anywhere.